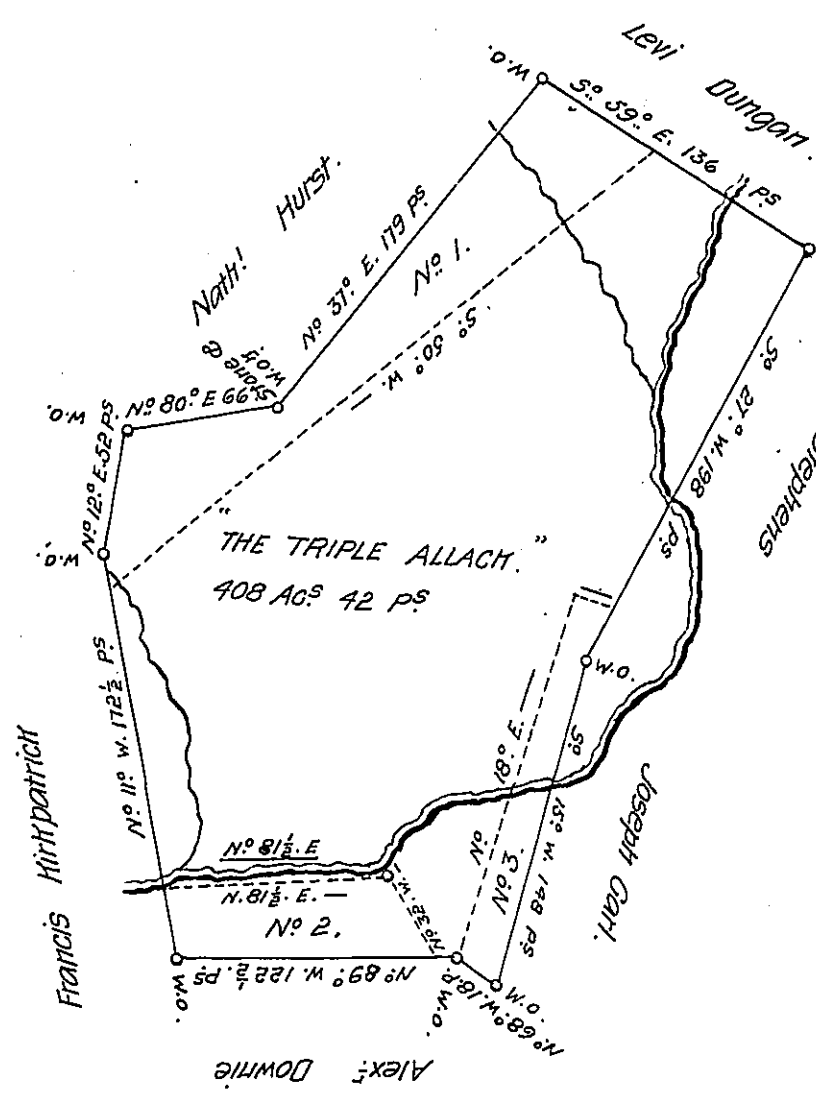


— SW 6142-27 —

X  
30  
Not Pat  
1-92



The Segment No 1 was surveyed and returned on a warrant in the name of J<sup>r</sup>. Hurst.  
No 2 was surveyed, returned, and Patented on a Warrant in the Name of Alex<sup>r</sup>. Downie.  
No 3. is said to be a Claim & Survey of Joseph Herl we know not the Authority, we know not the Authority, therefore did not ascertain the Lines with Precision.

A Draught of a Survey called "The Triple Allach" situate on Kings C<sup>t</sup> in Washington County, contain<sup>g</sup> 408 Ac 42 Ps strict Measure executed <sup>Mar</sup> May the 1<sup>st</sup> 1786 in Consequence of a Certif<sup>o</sup> granted to William Forsyth for 400 Ac<sup>s</sup> by the Commiss<sup>es</sup> appointed by Virginia to adjust the Claims to unpatented Lands in the Counties Monong<sup>o</sup> Johng<sup>o</sup> & Ohio & duly entered & C.

Presley Nevill }  
Matt<sup>r</sup>. Ritchie } D.S.<sup>s</sup>

IN TESTIMONY that the above is a copy of the original remaining on file in the Department of Internal Affairs of Pennsylvania, made conformably to an Act of Assembly approved the 16th day of February, 1833, I have hereunto set my Hand and caused the Seal of said Department to be affixed at Harrisburg, this twentieth day of March 1908.

*Henry Howell*  
Secretary of Internal Affairs.